

WindO/I[®]-NV

Chapter 3: Screen Management

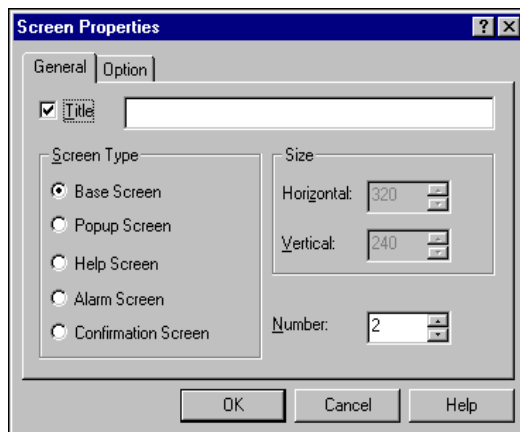
This chapter contains information on how to create and manage the screens that are used in WindO/I-NV.

1 Screen Basics

To create a new screen, choose [File]-[New Screen] or select the [New Screen] icon in the Normal toolbar. The [Screen Properties] dialog box appears.



Screen Properties—General Tab



Screen Type

You can create five different types of screens with WindO/I-NV.

- *Base Screen*
The base screen displays information and will determine the standard look of the screen. Base screens are created by arranging previously prepared parts (such as trigger switches, graphic display devices, and numerical display devices) on the personal computer screen. Text and graphics can be drawn directly on the screen.
 - *Popup Screen*
These screens can be programmed to pop up on base screens under select conditions.
 - *Help Screen*
Allows you to create help screens to provide additional information to users when they perform certain functions. Help screens are similar to pop-up screens except that Help screens cannot handle parts or functions.
 - *Alarm Screen*
Displays alarms and error messages.
 - *Confirmation Screen*
Acknowledge and confirm alarms.
- The available screen types will be determined by the O/I type you specified.

| Screen Type | No. of Screens | |
|----------------------------|----------------|------|
| | HG1B | HG2A |
| Base Screens | 1024 | 1024 |
| Popup Screens | N/A | 256 |
| Help Screens | N/A | 256 |
| Alarm Screens | 32 | 120 |
| Alarm Confirmation Screens | 32 | 120 |



1. Once you create a screen, you can modify its properties, except for screen type, by double-clicking at any point in the screen other than on an object.

Size

Allows you to change the size of Popup or Help screens. The Size option is not available for Base, Alarm, and Confirmation screens.

- *Horizontal*
Enter the width of the screen. The range is 2 to 320. The default width is set to 320.
- *Vertical*
Enter the height of the screen. The range is 2 to 240. The default height is set to 240.

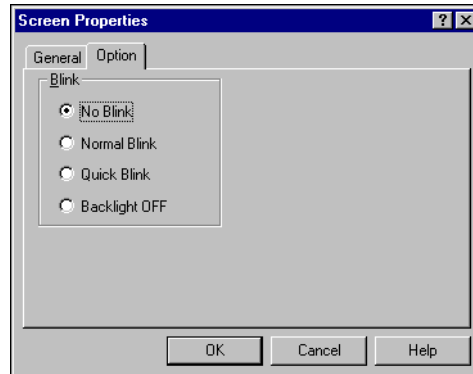
Number

Enter the screen number. The range of the screen number will change according to the O/I type.

Title

Input a title for the screen. The title can be 40 characters long. You also cannot use a blank space, any special character or script keyword in the name.

Screen Properties–Option Tab



- *No Blink*
Screen will stay ON all the time.
- *Normal Blink*
1 second (duty cycle 1:1)
0.5 sec ON, 0.5 sec OFF
- *Quick Blink*
0.5 sec (duty cycle 1:1)
0.25 sec ON, 0.25 sec OFF
- *Backlight OFF*
Screen will be off all the time.

OK

Accepts the screen properties and opens the new screen window.

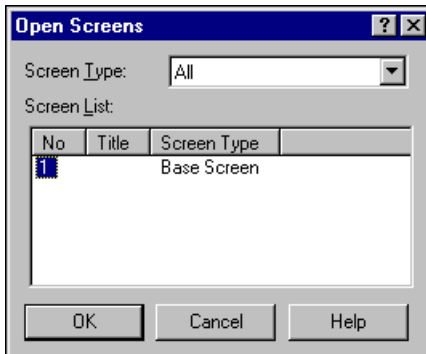
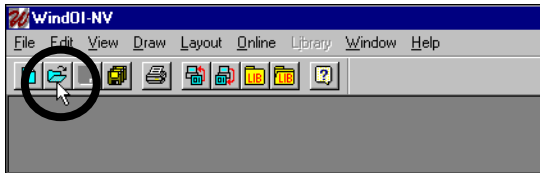
Cancel

Cancels the [Screen Properties] options.

2 Opening an Existing Screen

Once you open a project, you can then open previously created screens.

Choose [file]-[Open Screens] menu option, press [CTRL+O] or select [Open Screen] icon in the Normal toolbar. The [Open Screens] dialog box appears.



Screen Type

Select the appropriate screen type from the dropdown list.

Screen List

Lists the existing screens that belong to the selected screen type and that have not yet been opened. You can then select a screen to be opened. You can select multiple screens.



To select a series of screens, click on the first and last screen while pressing on the [SHIFT] key.

To select multiple screens that aren't in a series, click on the screens you want while pressing the [CTRL] key.

- *No*
Displays the screen number.
- *Title*
Display the screen title.
- *Screen Type*
Displays the screen type. You can sort the screens in ascending or descending order by clicking the headers of the screen list.

OK

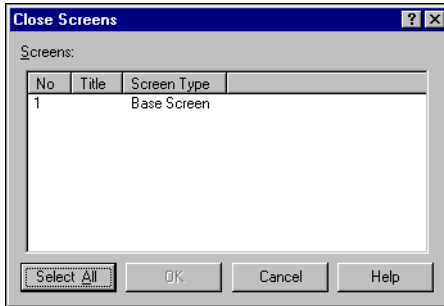
Opens all the selected screens. This option is not available if no screens are selected.

Cancel

Cancels the selection of screens and returns you to the main menu without opening any screens.

3 Closing a Screen

To close screens, choose [File]-[Close Screens] menu option. The [Close Screen] dialog box appears.



Screens

Provides a list of opened screens. Select the screen that you want to close. You can select multiple screens.



To select a series of screens, click on the first and last screen number while pressing on the [SHIFT] key.

To select multiple screens that aren't in a series, click on the screen numbers you want while pressing the [CTRL] key.

- *No*
Displays the screen number.
- *Title*
Displays the screen title.
- *Screen Type*
Displays the screen type.

Select All

Selects all the screens from the opened list.

OK

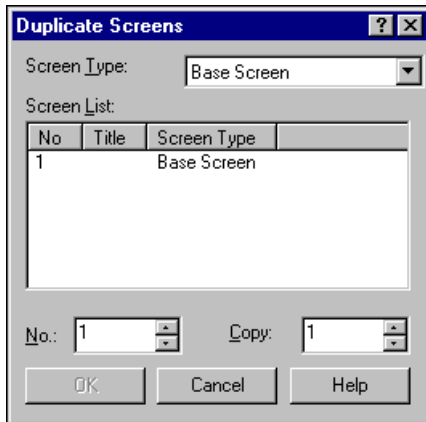
Closes all selected screens. This feature is not available if no screens are selected.

Cancel

Cancel the selection of screens and returns to the main menu without closing any screens.

4 Duplicating a Screen

To duplicate a screen, choose [File]-[Duplicate Screens] menu option. The [Duplicate Screens] dialog box appears.



Screen Type

Select the appropriate screen type from the drop down list.

Screen List

Lists the existing screens that belong to the selected screen type. Select a screen to be duplicated. You can select multiple screens.



To select a series of screens, click on the first and last screen while pressing on the [SHIFT] key.

To select multiple screens that aren't in a series, click on the screens you want while pressing the [CTRL] key.

- *Title*
Displays the screen title.
- *Screen Type*
Displays the screen type. You can sort the screens in ascending or descending order by clicking the headers of the screen list.

No.

Enter the destination screen number for duplicating the screen. If the file name already exists, WindO/I-NV will confirm if you wish to overwrite it.

Copy

Enter the number of times that you wish to duplicate the screen(s).

OK

Duplicates the selected screens. This option will not be available if no screens are selected.

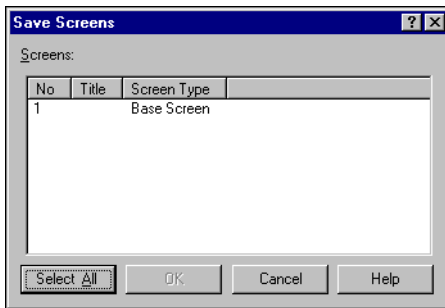
Cancel

Cancels the duplicate function and returns you to the main menu.

- *No*
Displays the screen number.

5 Saving a Screen

To save the changes you have made to a screen, choose the [File]-[Save Screens] menu option, press [CTRL+S] or click the [Save] icon in the Normal toolbar. The [Save Screens] dialog box appears.



Screens

Provides a list of opened screens. Select the screen that you want to save. You can select multiple screens.



To select a series of screens, click on the first and last screen while pressing on the [SHIFT] key.

To select multiple screens that aren't in a series, click on the screens you want while pressing the [CTRL] key.

- *No*
Displays the screen number.
- *Title*
Displays the screen title.

- *Screen Type*
Displays the screen type.

Select All

Selects all the screens from the opened list.

OK

Saves all selected screens. This feature is not available if no screens are selected.

Cancel

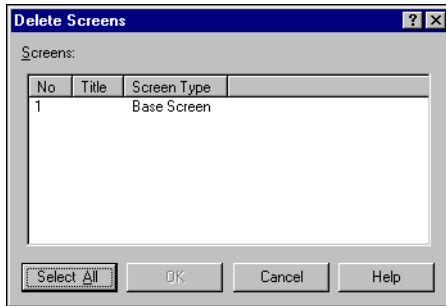
Cancel the selection of screens and returns to the main menu without saving any screens.



If you do not save changed screens using this option, WindO/I-NV will prompt you to save the screen when you choose to close the screen or project.

6 Deleting a Screen

To delete unwanted screens, choose the [File]-[Delete Screens] menu option. The [Delete Screens] dialog box appears.



Screens

Provides a list of existing screens. Select the screen that you want to delete. You can select multiple screens.



To select a series of screens, click on the first and last screen while pressing on the [SHIFT] key.

To select multiple screens that aren't in a series, click on the screens you want while pressing the [CTRL] key.

- *No*
Displays the screen number.
- *Title*
Displays the screen title.
- *Screen Type*
Displays the screen type.

Select All

Selects all the screens from the list.

OK

If you click on [OK], a dialog box will appear, confirming that you wish to delete each selected screen. To continue deleting the screens, select [OK] in each dialog box. This feature is not available if no screens are selected.

Cancel







Cancels the selection of screens and returns to the main menu without deleting any screens.

7 Drawing Graphics

WindO/I-NV provides a wide range of graphic tools for creating screens.

These icons can be selected by choosing [View]-[Toolbar]-[Drawing].

| Tool Name | Icon | Description |
|----------------|---|----------------------------------|
| Select |  | Selects an object. |
| Line |  | Draws a straight line. |
| CLine |  | Draws a continuous line. |
| Polygon |  | Draws a polygon. |
| Rectangle |  | Draws a rectangle. |
| Circle/Ellipse |  | Draws a circle or an ellipse. |
| Arc |  | Draws an arc. |
| Pie |  | Draws a pie or circular segment. |
| Triangle |  | Draws a triangle. |

| Tool Name | Icon | Description |
|-----------|---|------------------------|
| Square |  | Draws a square. |
| Pentagon |  | Draws a pentagon. |
| Hexagon |  | Draws a hexagon. |
| Octagon |  | Draws an octagon. |
| Bitmap |  | Import a bitmap file. |
| Text |  | Inserts a text object. |